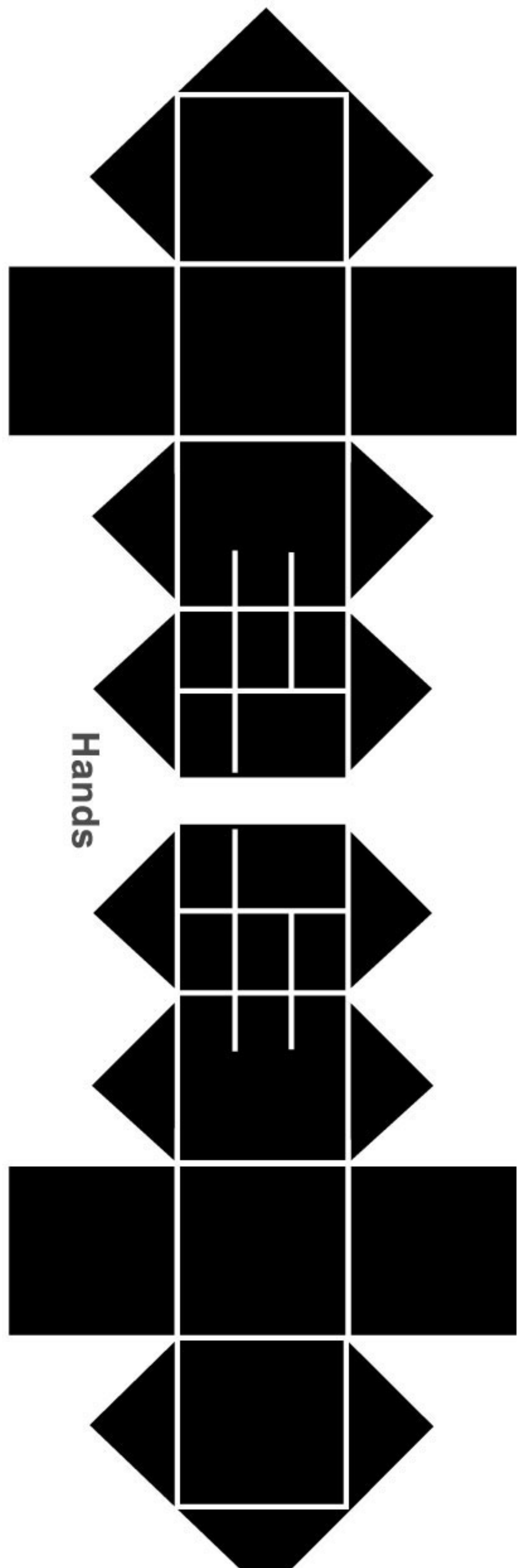


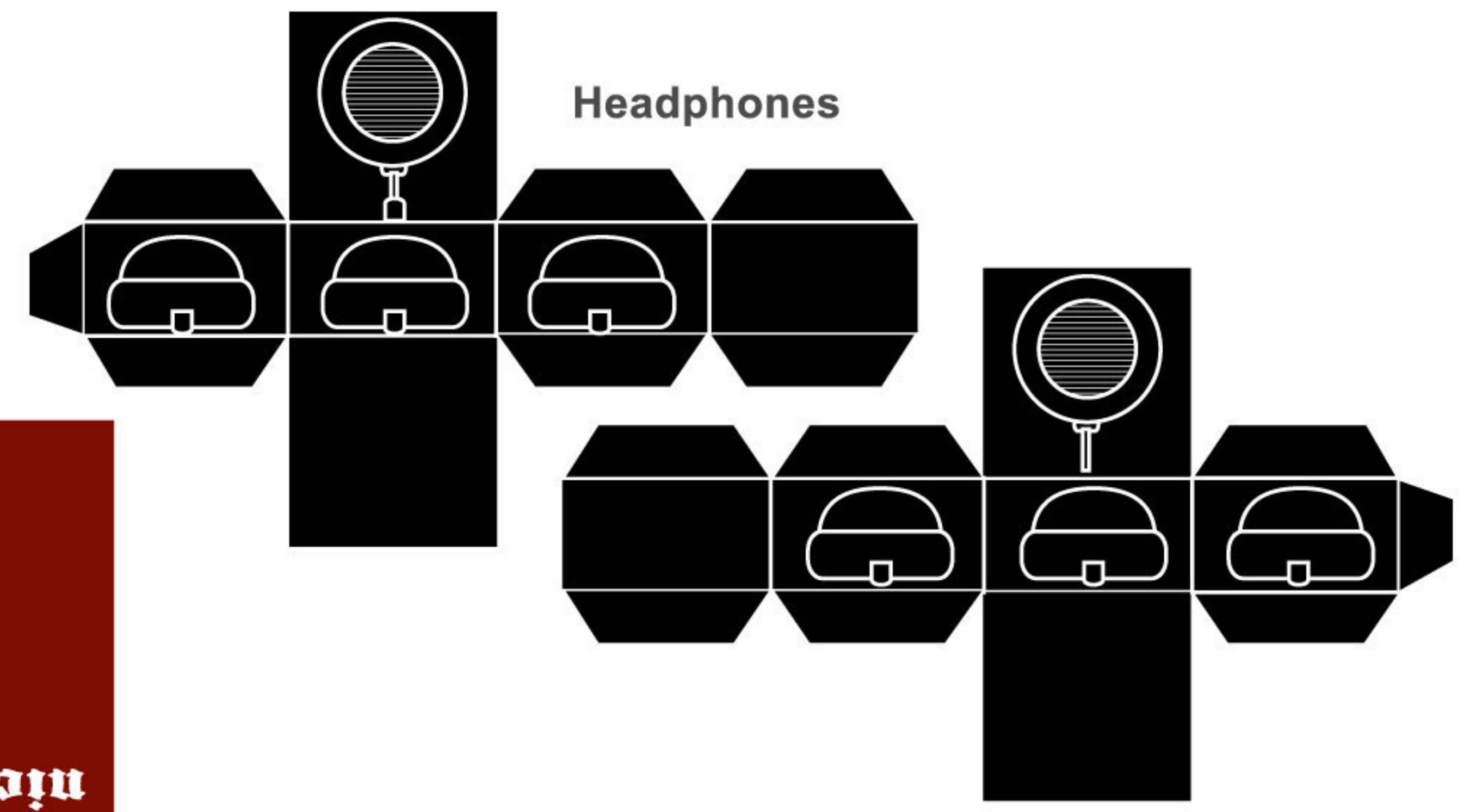
Before cutting out shapes, score all grey lines first, by gently running exacto blade across them.



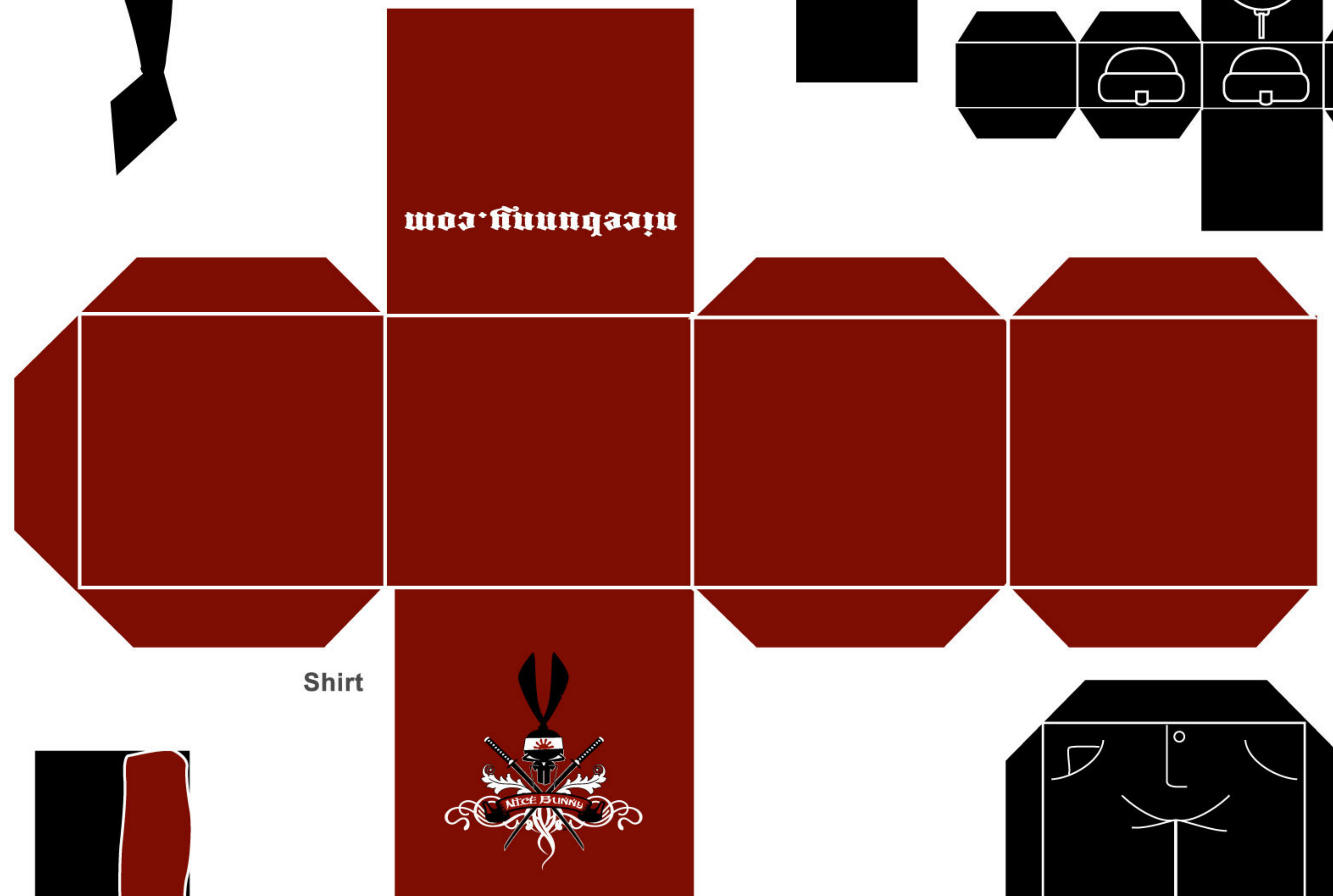
Hands



Left Ear

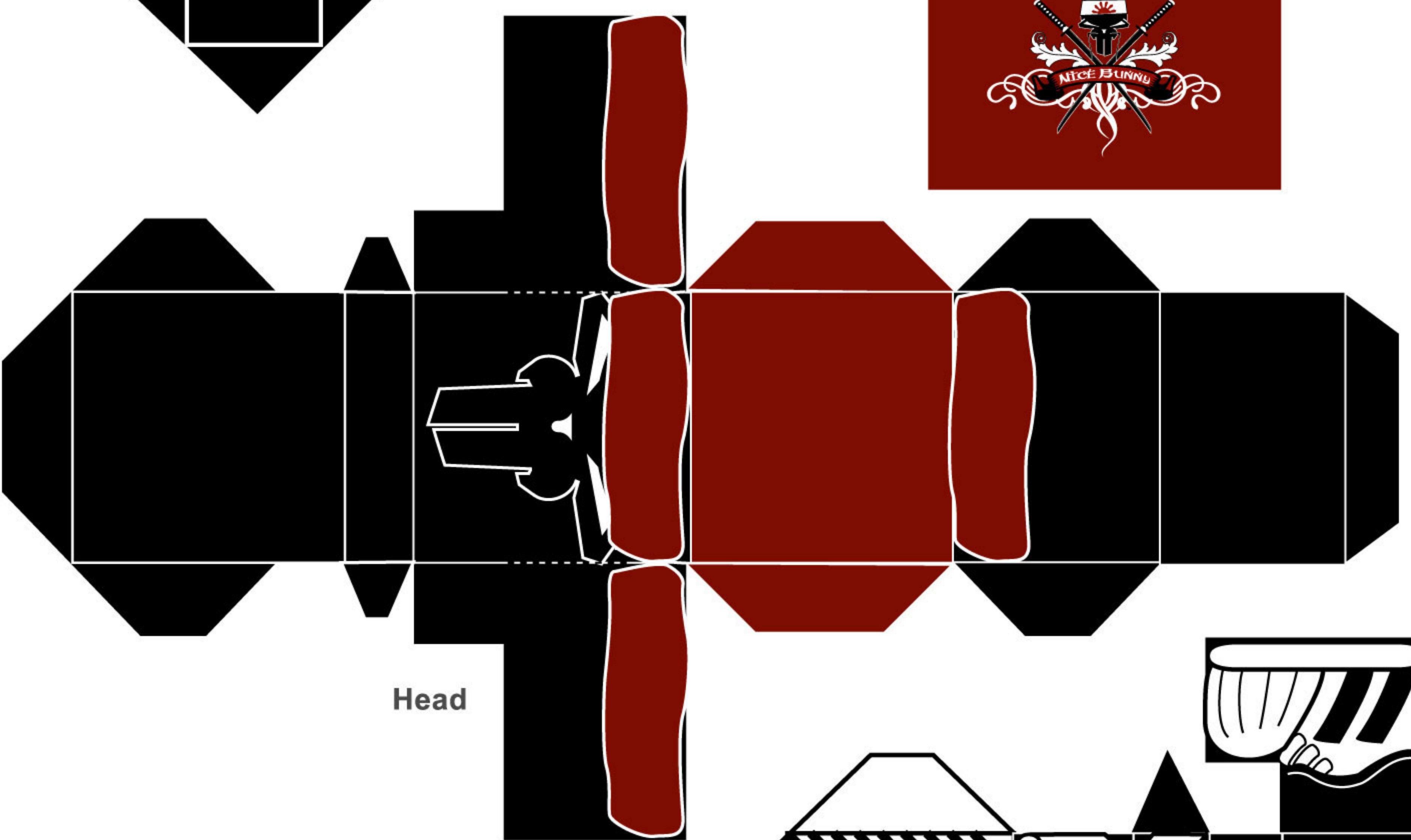


Headphones

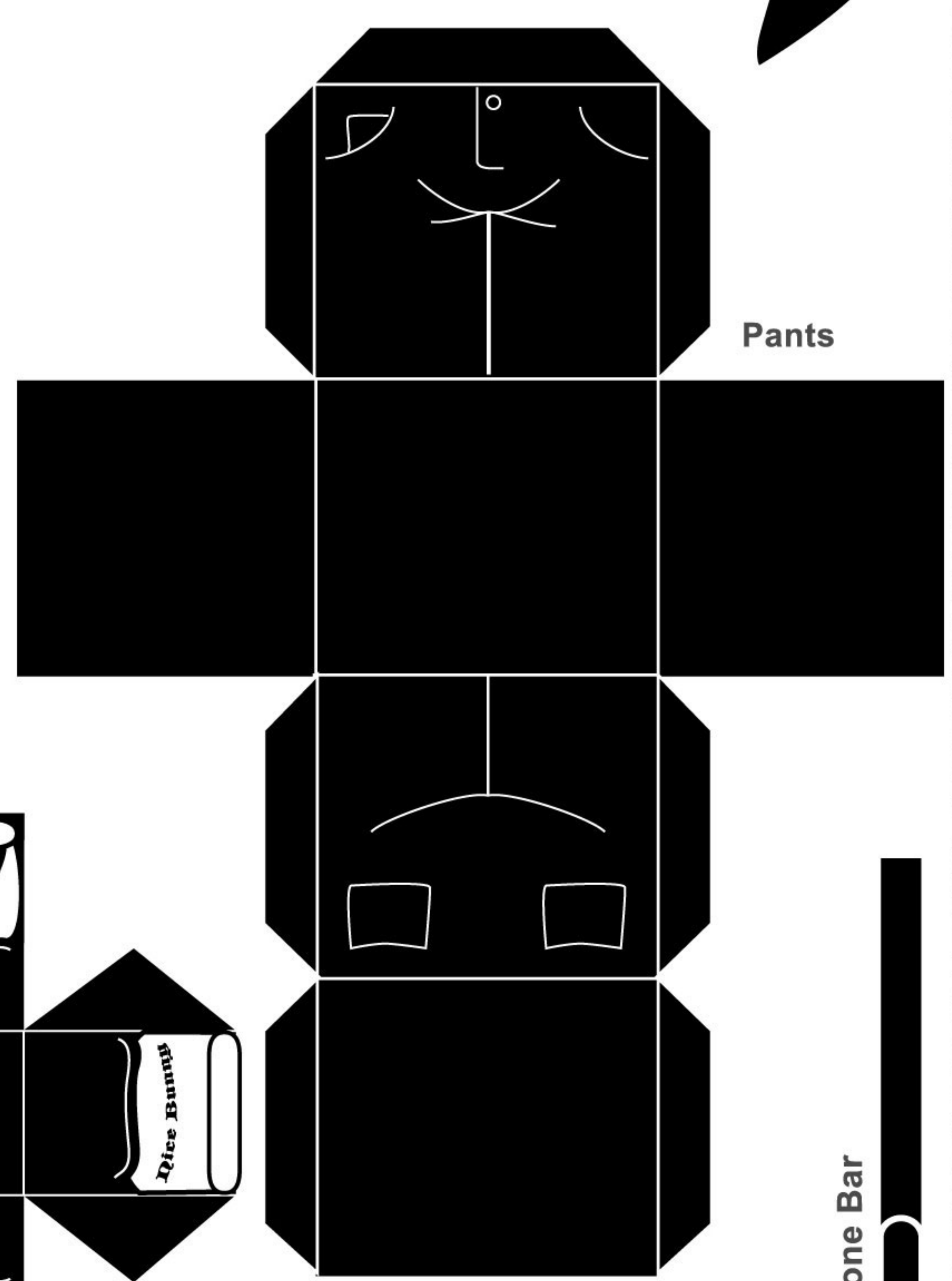


Shirt

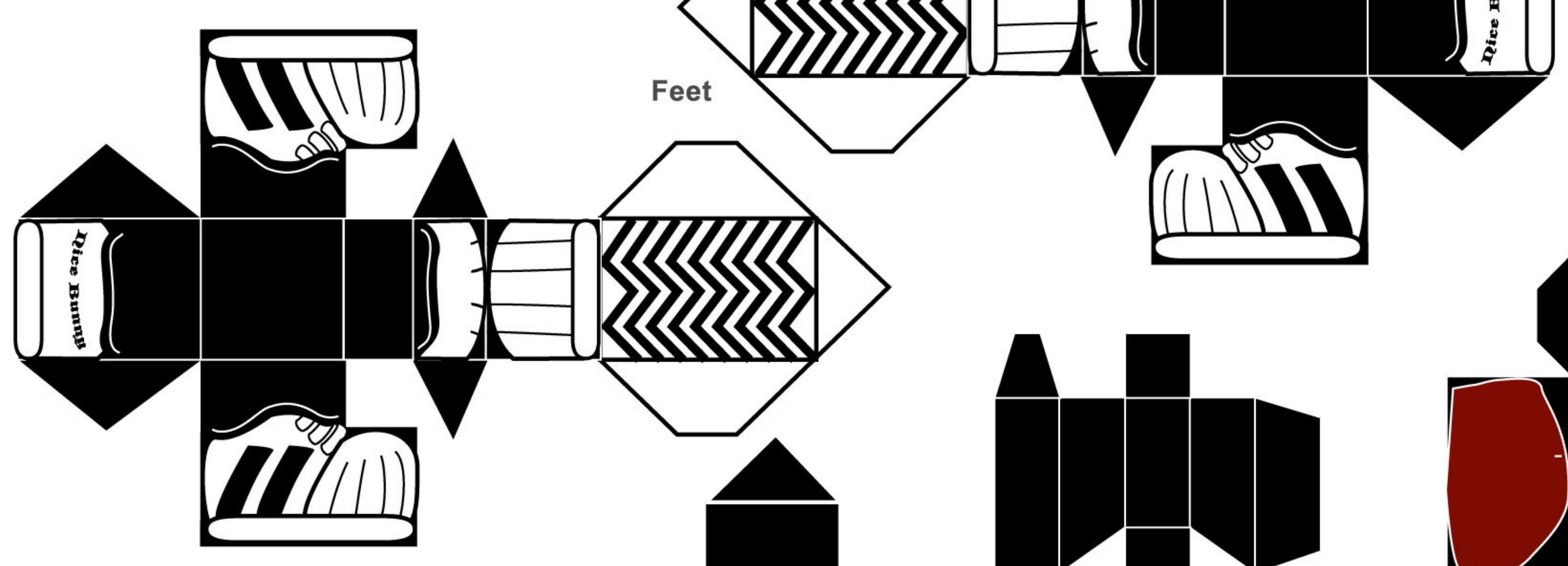
Right Ear



Head

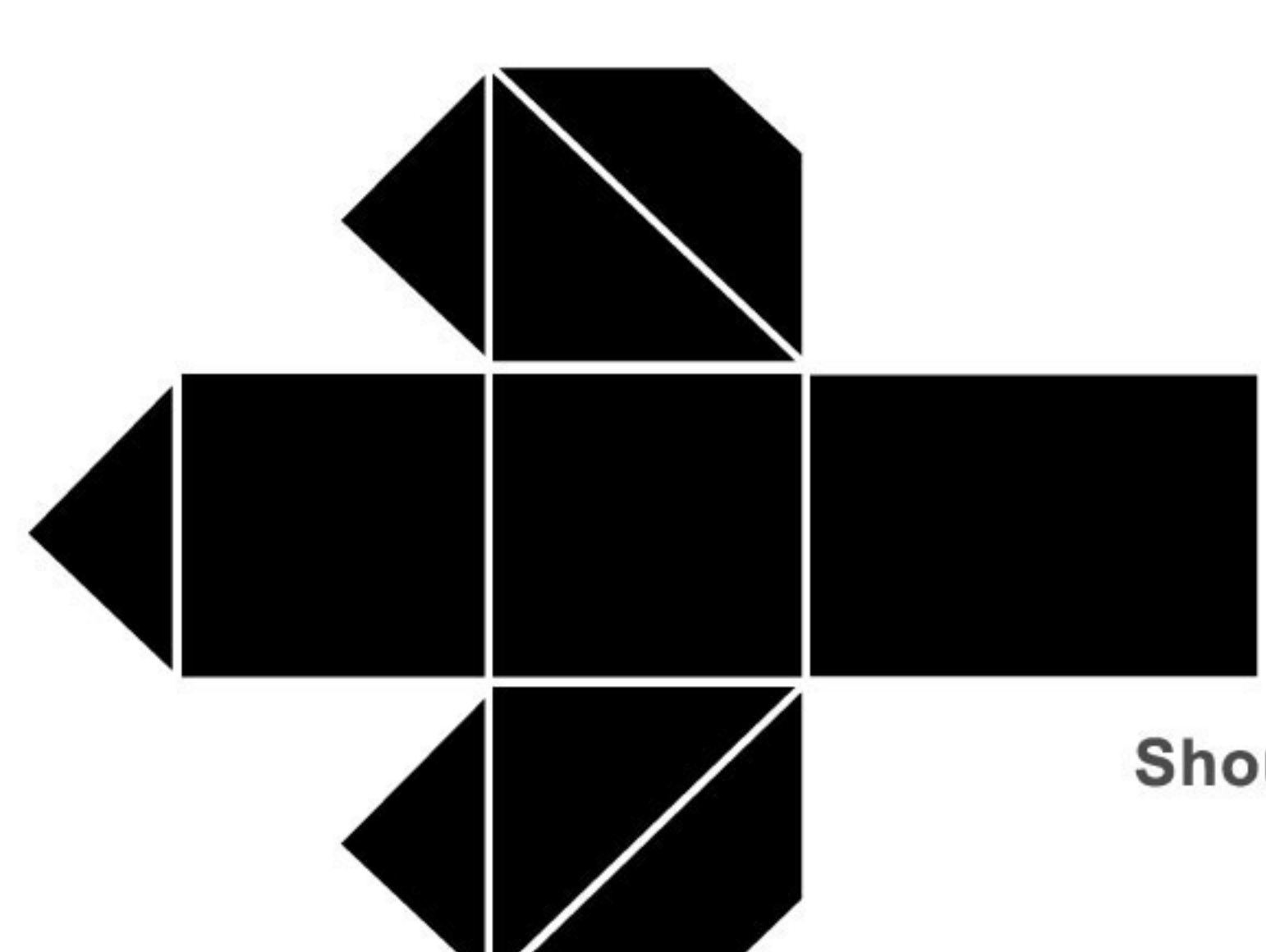


Pants

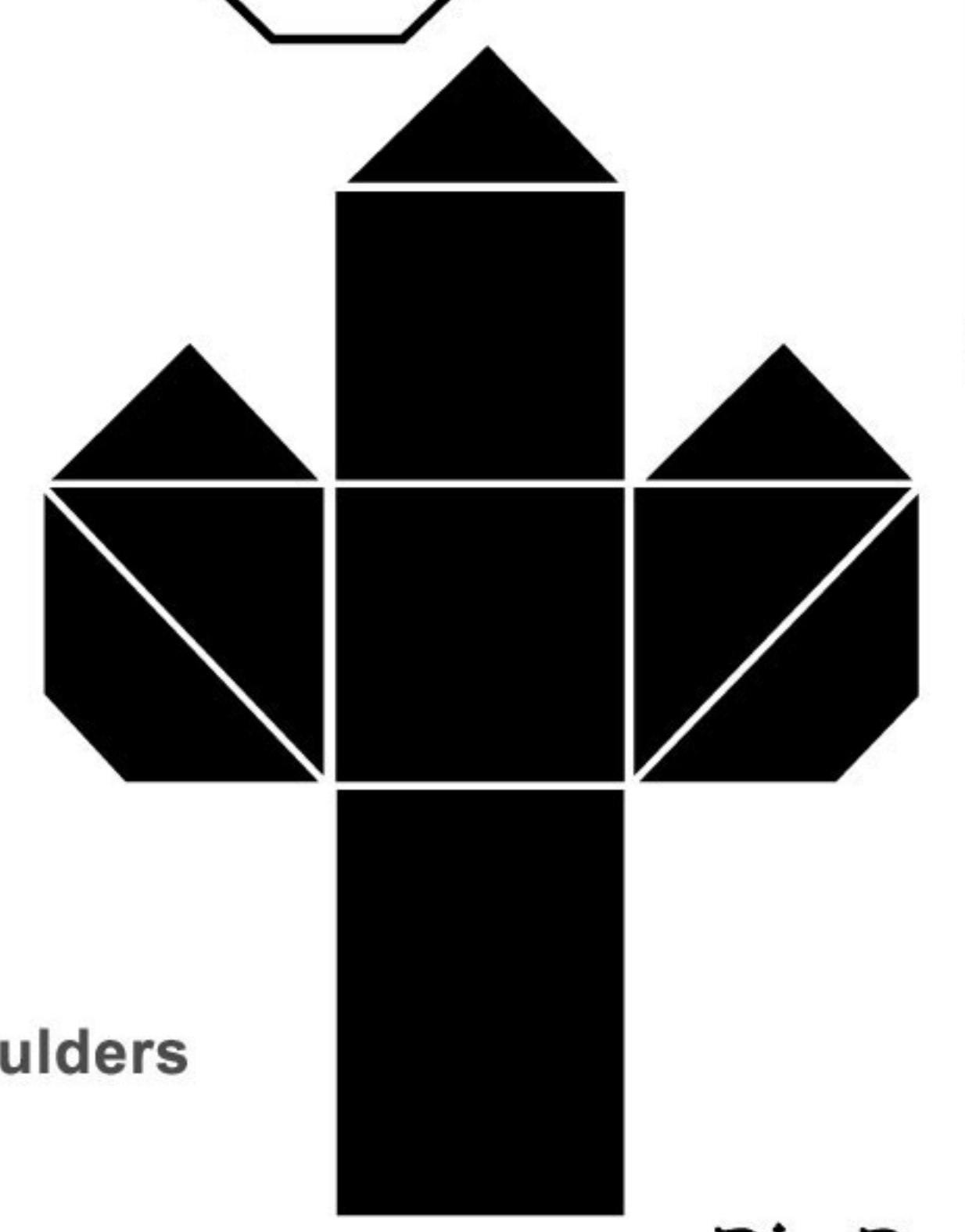


Feet

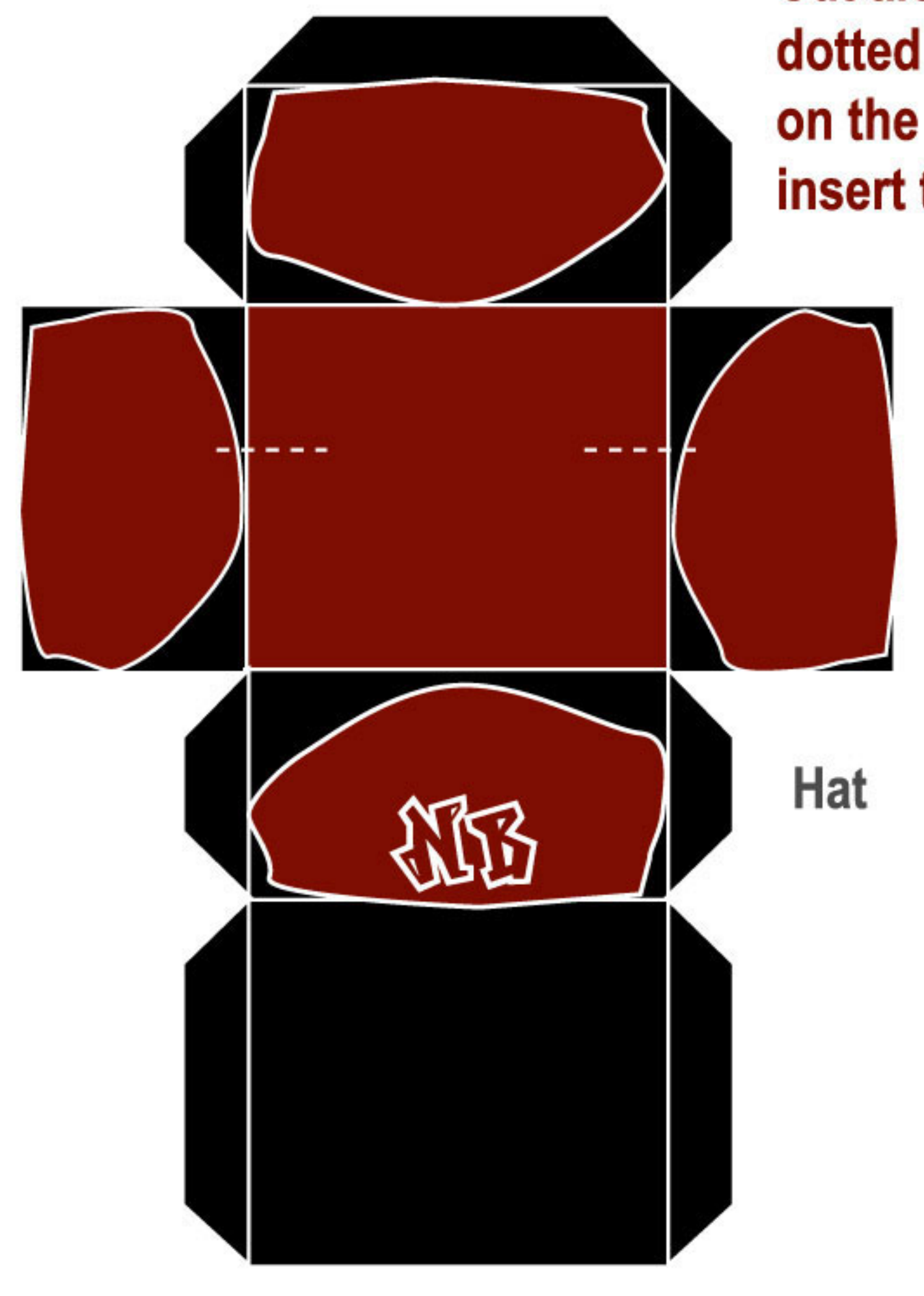
Cut along the dotted lines on the hat to insert the ears.



Shoulders

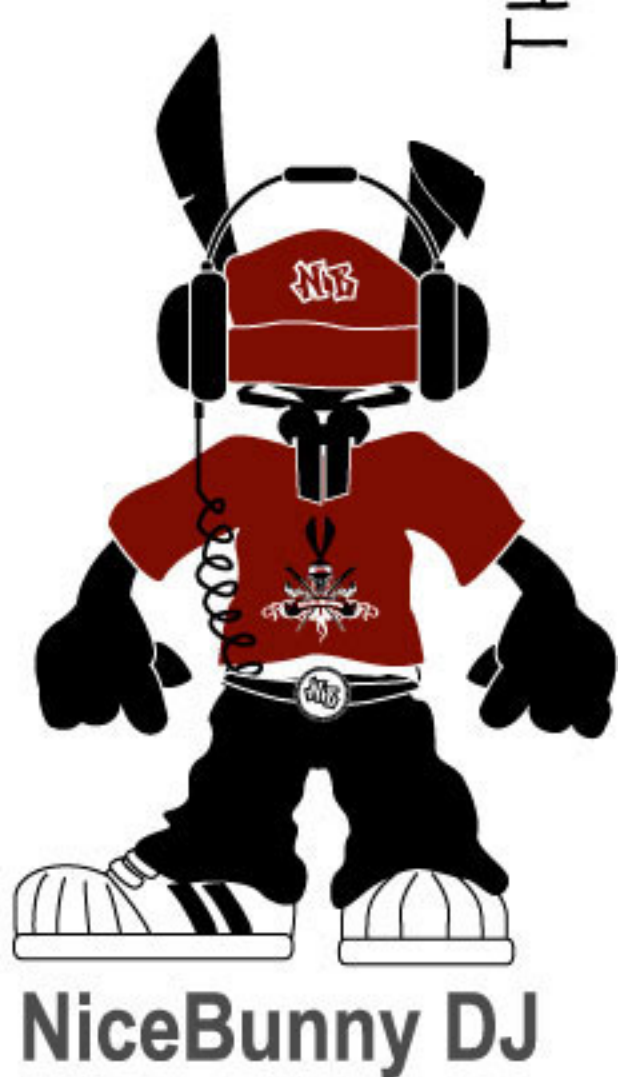


Arms



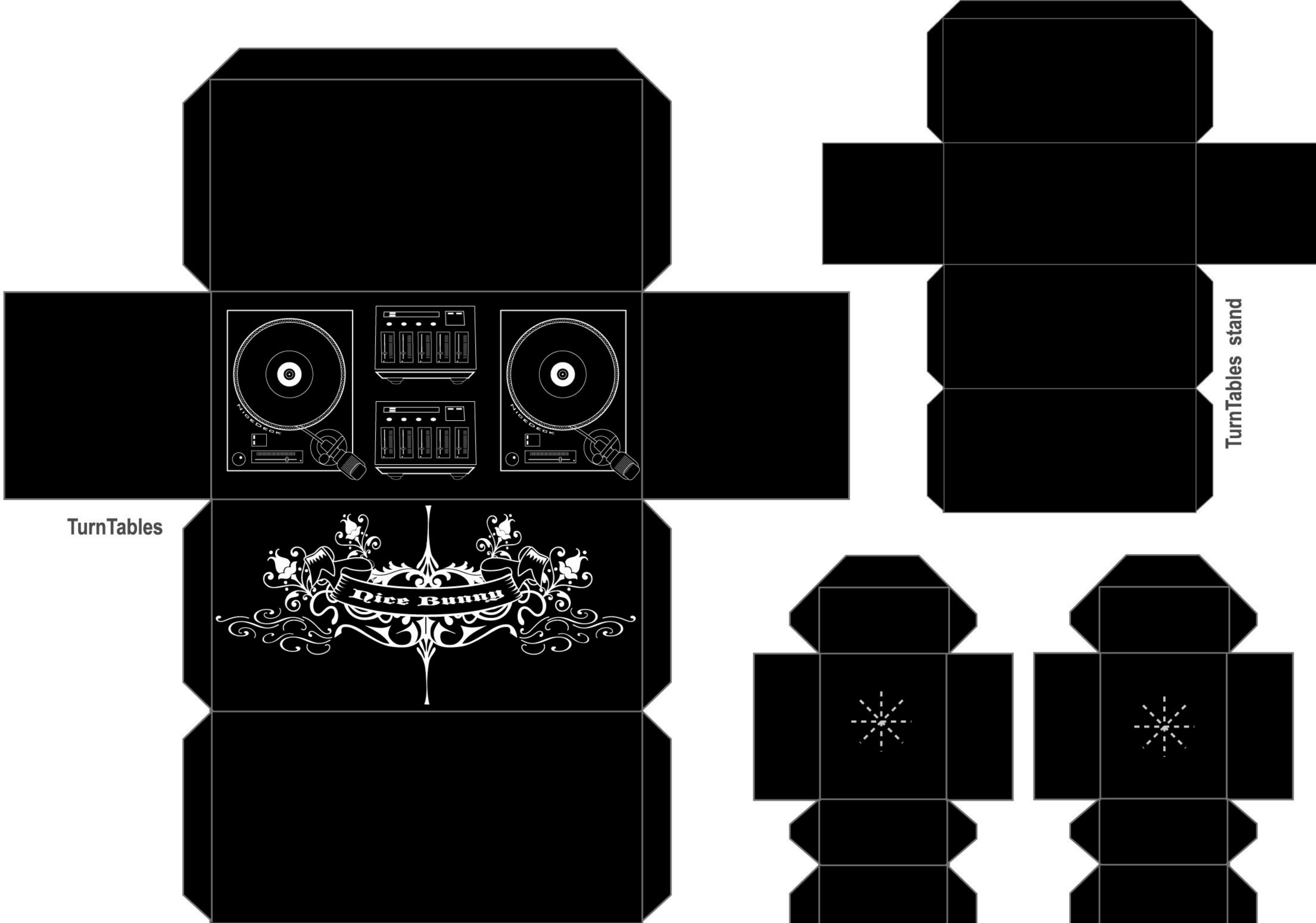
Hat

HeadPhone Bar



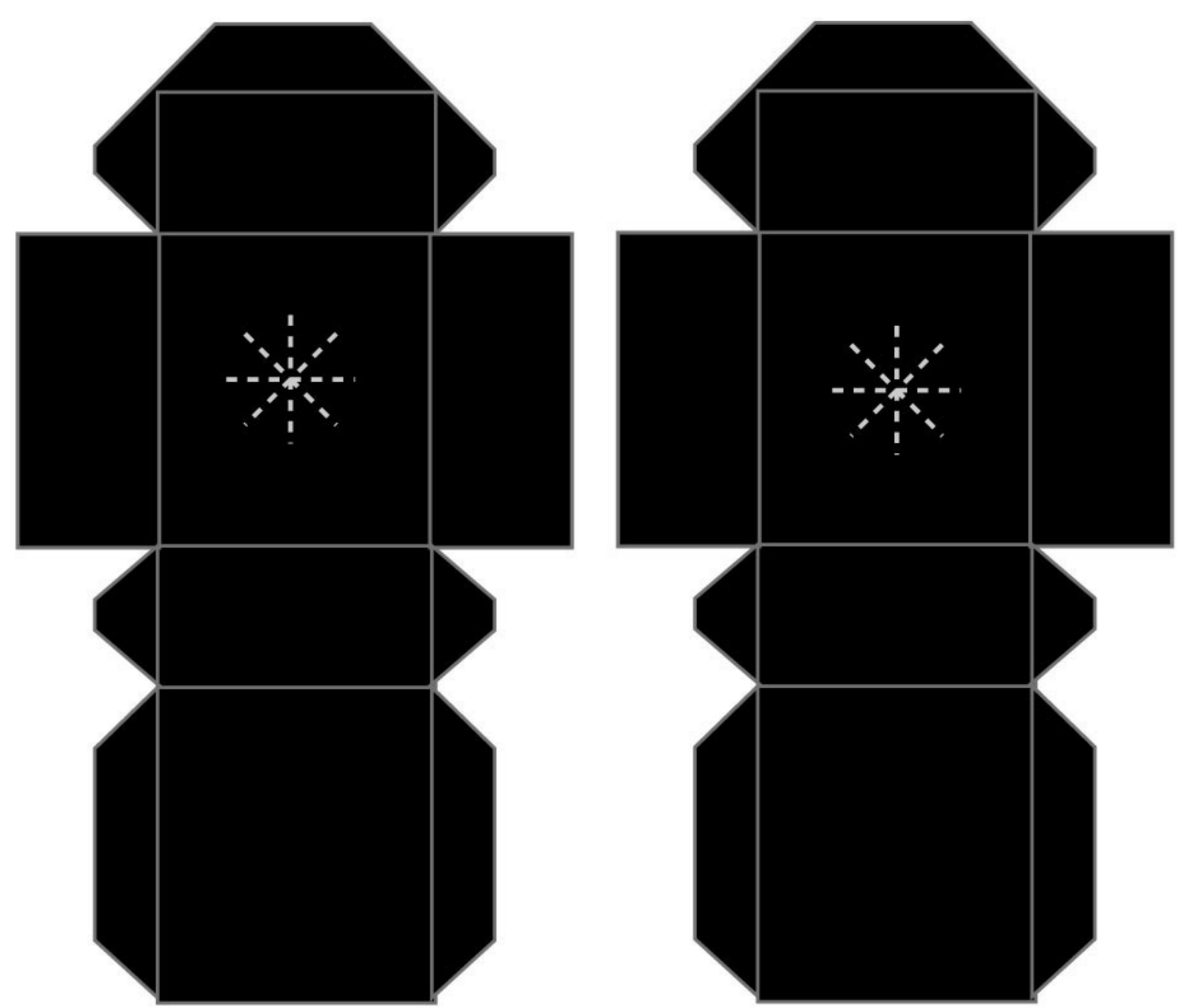
NiceBunny DJ

THE NICEBUNNY™ PAPER TOYS ARE © BRIAN CASTLEFORTE & INSPIRED BY & BUILT ON THE BRICKBOY TEMPLATE © SJORS STRIMBACH, WITH PERMISSION

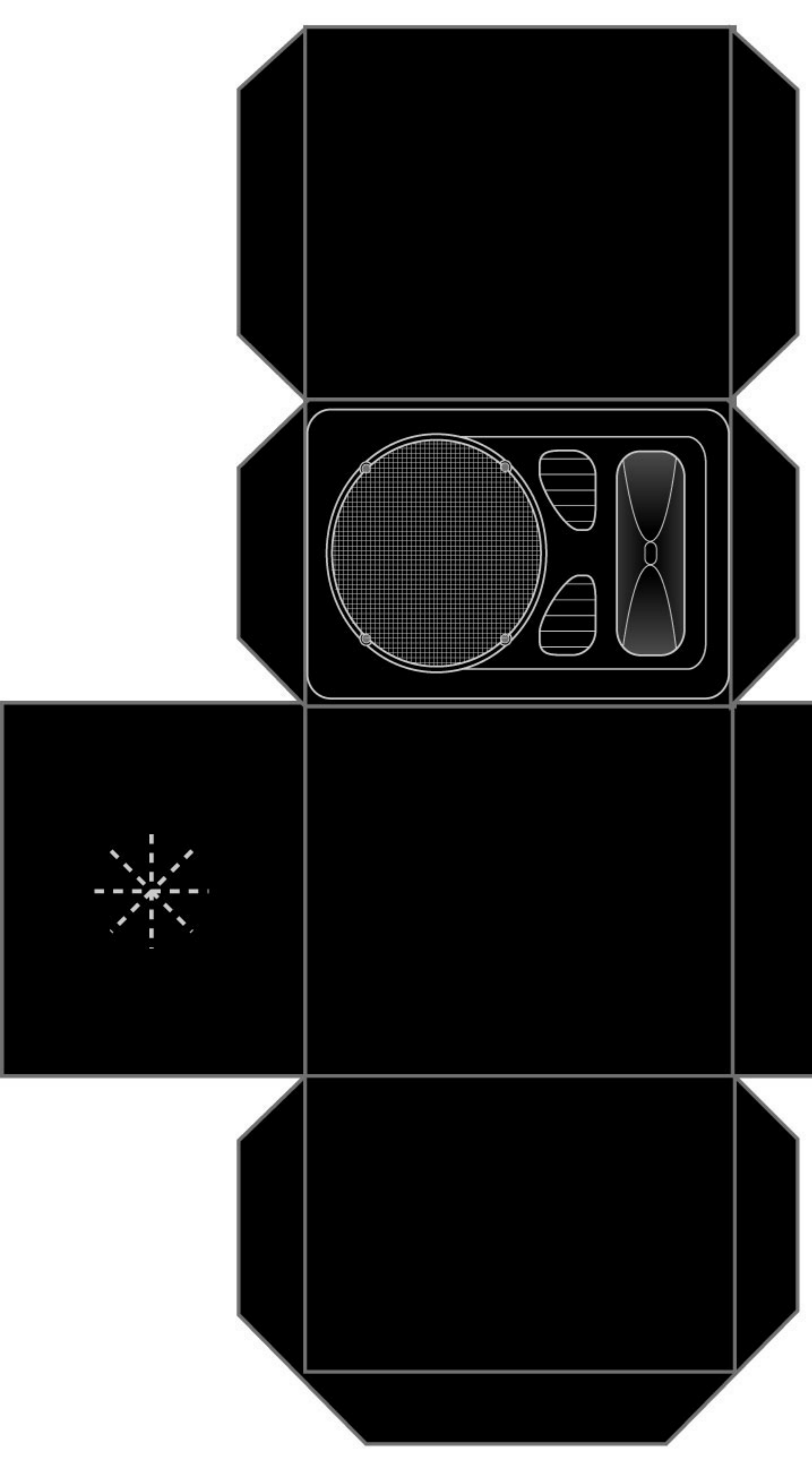


TurnTables

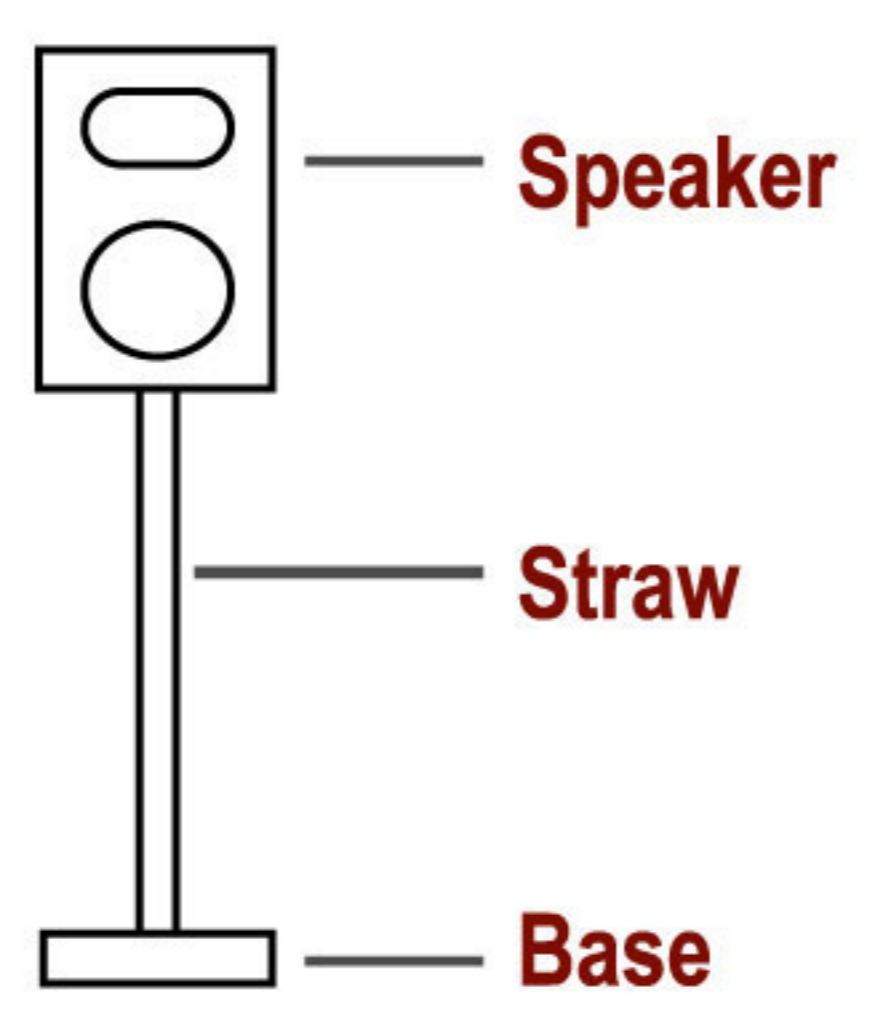
TurnTables stand



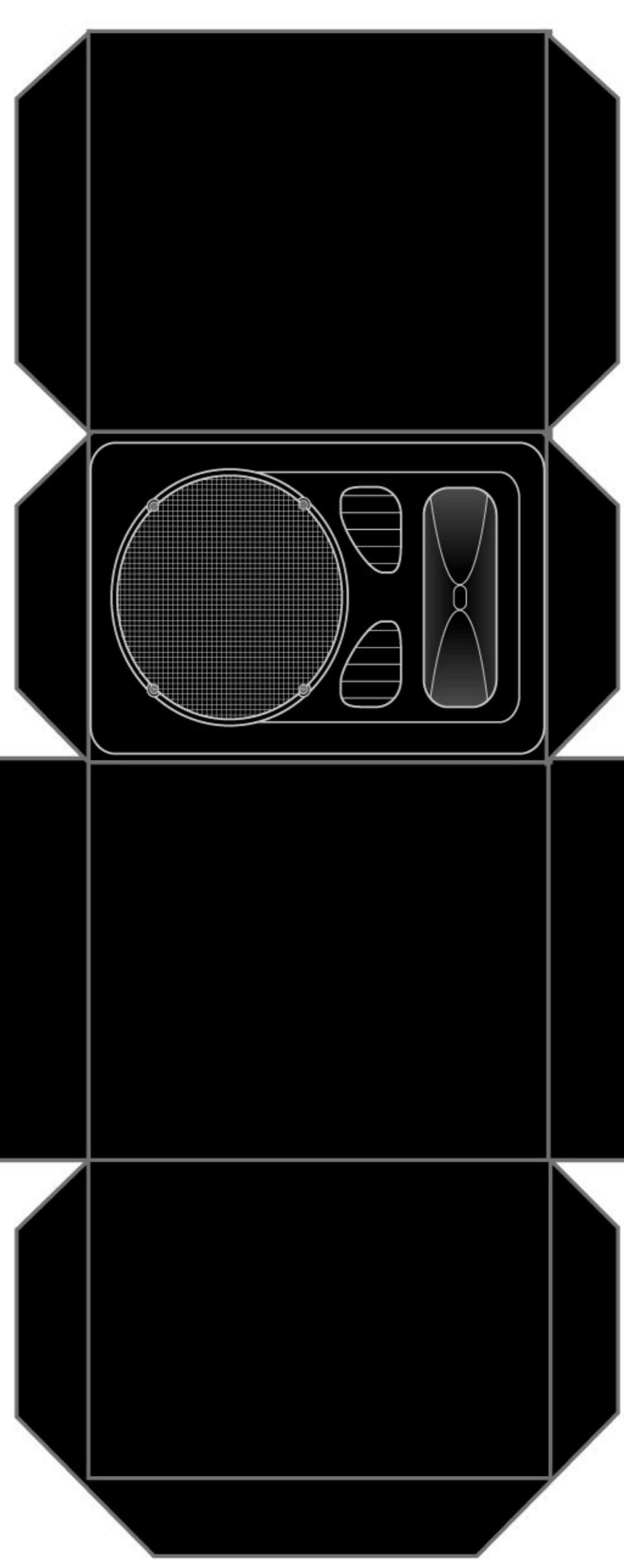
Speaker Stand Bases



Use a straw for speaker stand poles.

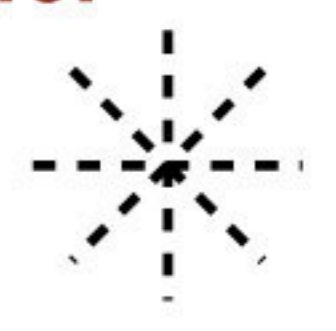


Speakers



Before cutting out shapes, score all grey lines first, by gently running exacto blade across them.

Cut along the dotted lines to create a "star" hole for the straw to enter.



DJ Booth

